

# Autoadapt Safety Centre

## Is safety an option for everyone?

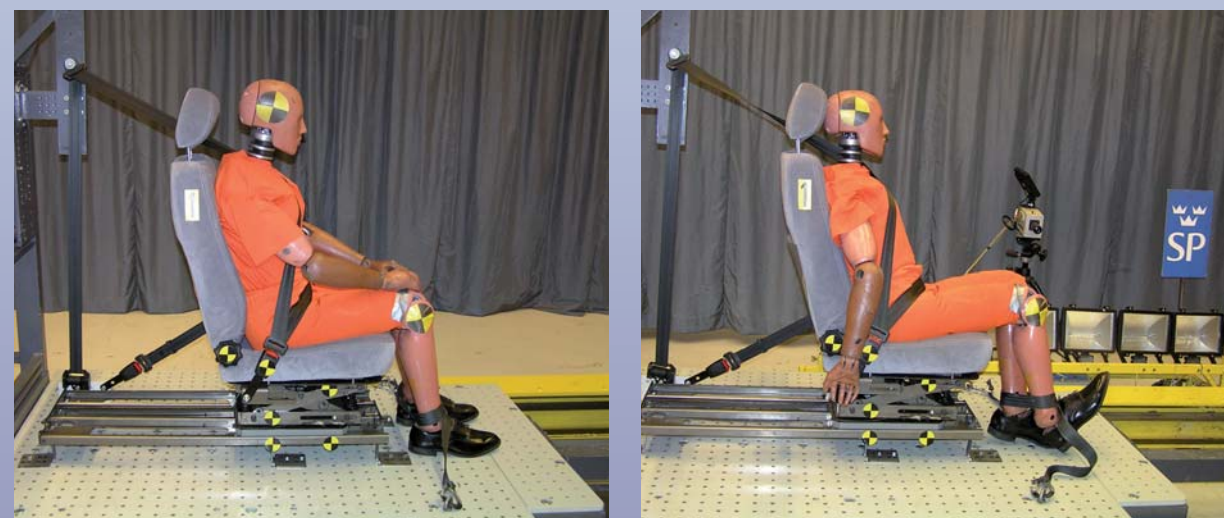
Within the European Union, 15 - 20% of its over 500 million citizens have some kind of disability and about 1% of the citizens are in need of a wheelchair. The European Union has about three million driving licence holders who are disabled in some way. The percentage of disabled people worldwide would probably be more or less the same.

We know that many of the disabled passengers travel poorly secured when seated in their wheelchairs and that many users of an adapted car travel with insufficient safety. It is clear to see that there is a huge demand for safe mobility transportations and higher safety awareness in the car adaptation industry.

Autoadapt is working actively to enhance the safety level of car adaptation products. We regard it as our mission to offer the disabled drivers and passengers the same safety conditions as other road-users.

Through the years Autoadapt has invested a considerable amount of capital and effort to ensure that the products we supply are safety tested in compliance with the medical and vehicle directives. The safety demands are constantly increasing and Autoadapt strives to remain in the front line among producers of safe and reliable car adaptation products.

Crash test photos of the Autoadapt 6-Way-Base, made at SP (Swedish Test and Research Institute).  
The photo sequence shows before and after the test.



The Autoadapt products have, since the company started, been tested at the Swedish Test and Research Institute (SP).

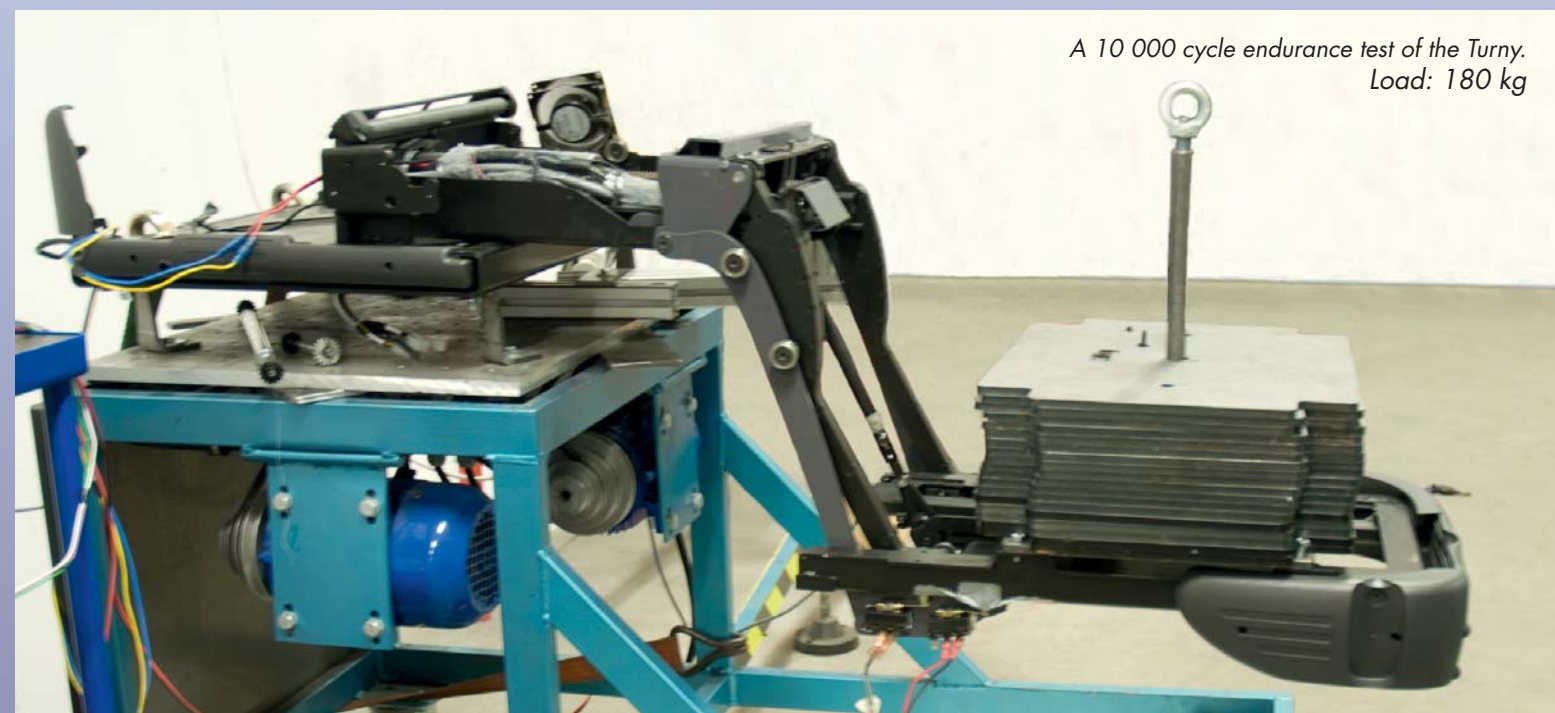
During the development of new products the Autoadapt design department needs to have constant access to making tests such as endurance, vibration, pull test, heat- and cold test, EMC test, crash test etc. In 2007, the company decided to invest in a pull test rig in order to be able to perform most of our tests in-house. With this the Autoadapt testing department has all test facilities within easy access, except for the crash tests, the fire tests and the EMC tests, which are made externally at the Swedish Test and Research Institute (SP).

Autoadapt Safety Centre has since May 2009 been accredited by SWEDAC according to ISO/IEC 17025. This means that the Autoadapt Safety Centre has the authority to serve as test institute and issue documents also for other companies and organizations.



Autoadapt performs pull-test on the mounting brackets for our products to ensure that they fulfil the requirements for a safe installation.

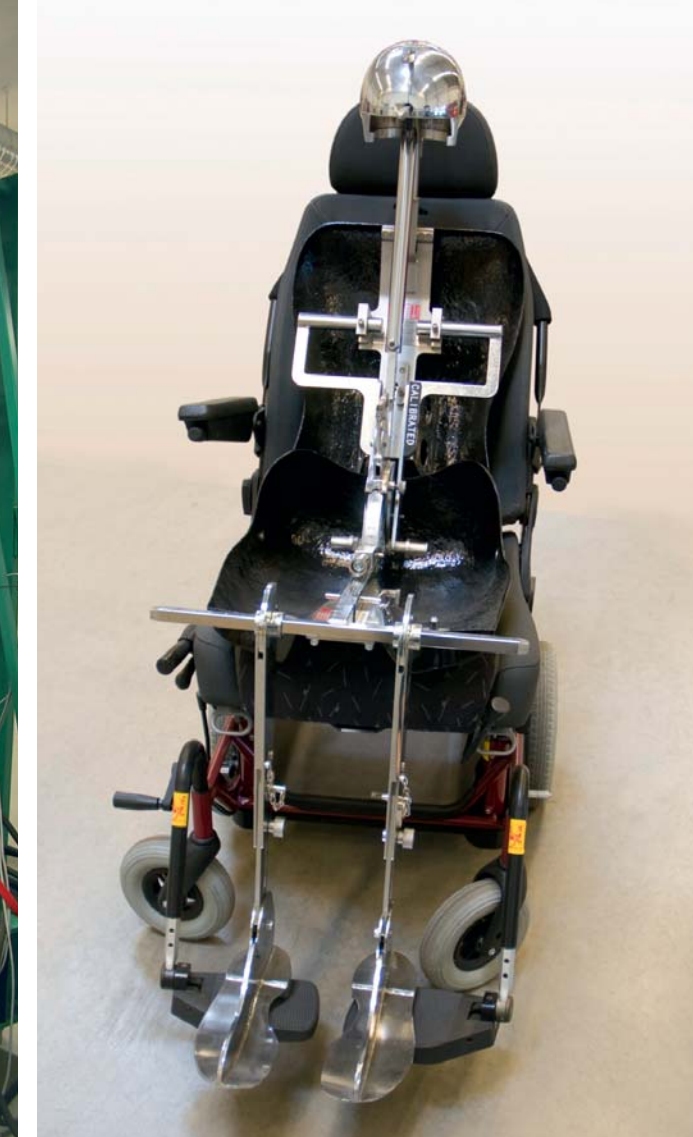
Autoadapt can also perform random tests of units produced, which reduces the risk of faulty products being sent out and creates better conditions for maintaining the highest level of quality.



A 10 000 cycle endurance test of the Turny.  
Load: 180 kg



The pull testing device rigged with a vehicle chassis.



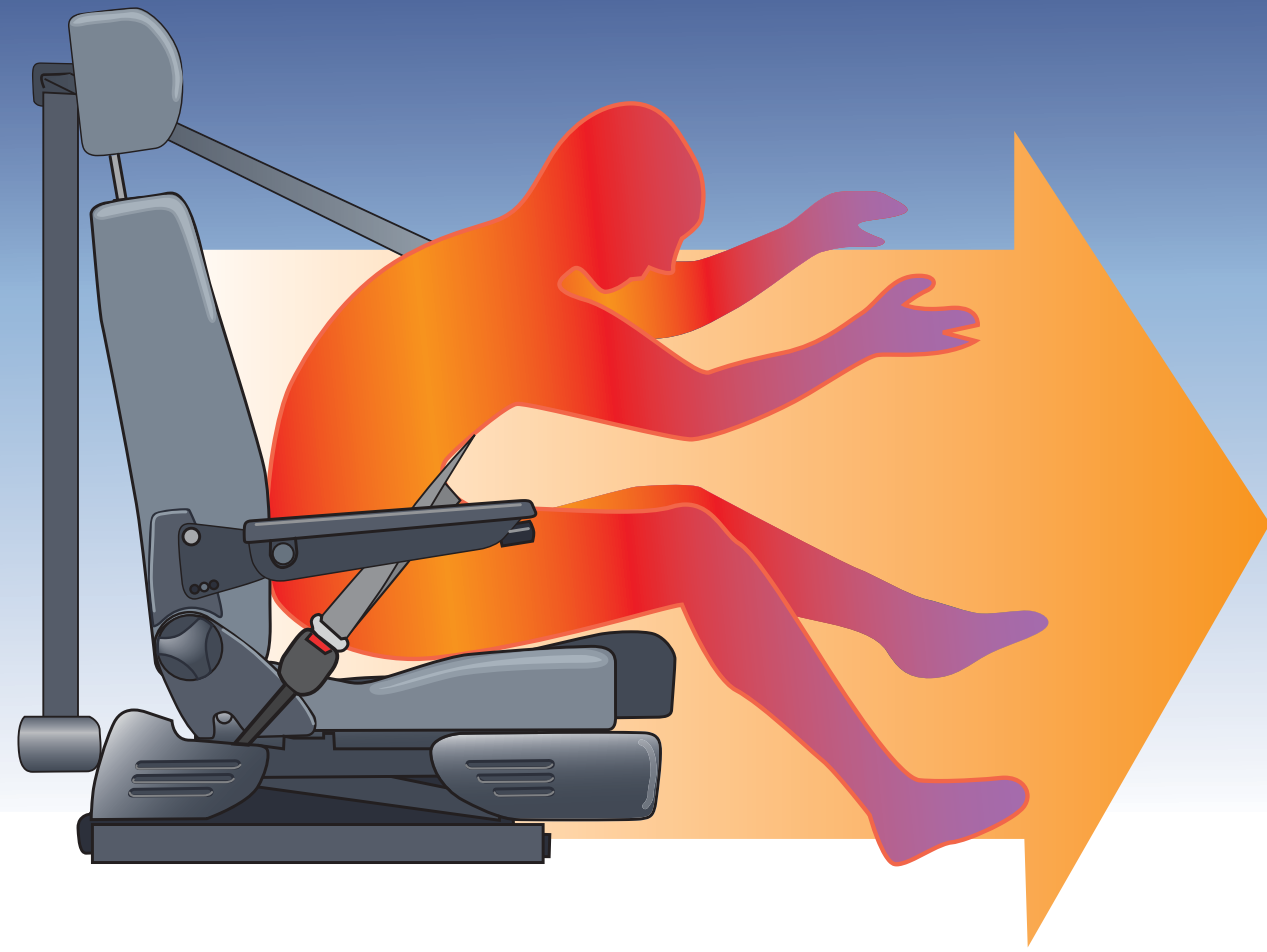
H-point dummy for testing seat anchorage, seatbelt anchorage, head restraint etc.



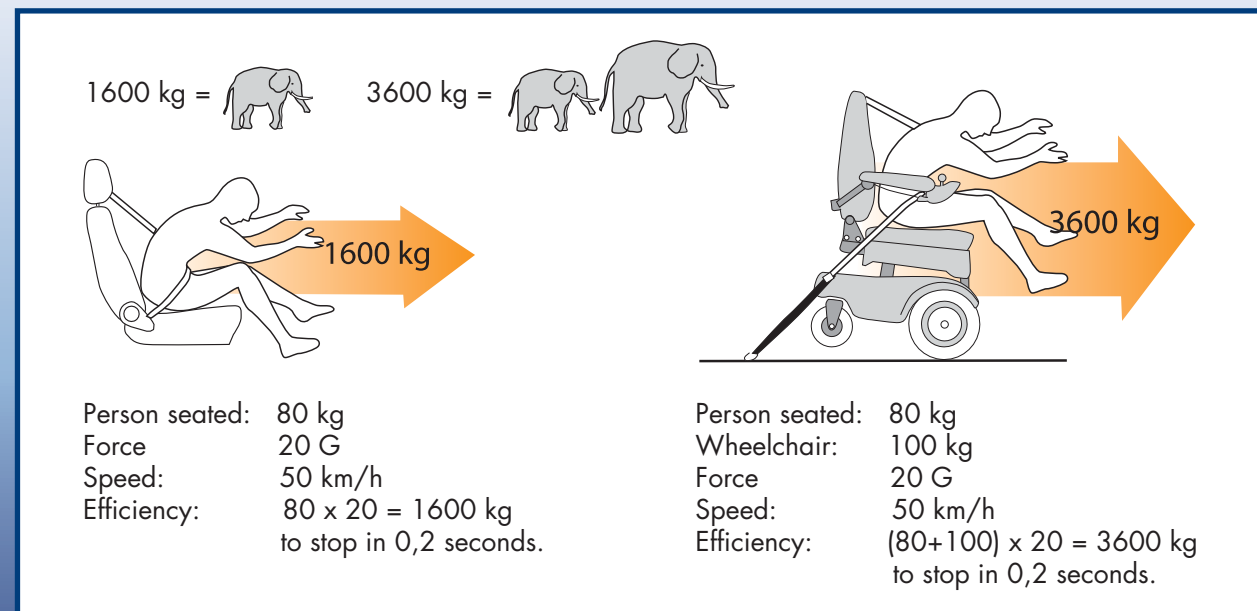
Endurance test of the Carony docking mechanism.



Preparing for an energy test of a seat.



Autoadapt designs and manufactures products that are safety tested in compliance with the medical and vehicle directives



Autoadapt is a leading global provider of vehicle adaptation solutions for people with reduced or limited mobility.

Our products are used by thousands of satisfied customers worldwide. Our long experience of vehicle adaptation has resulted in several innovations, such as the popular Carony vehicle wheelchair system and the Turny seat lift, making the disabled and elderly more independent.

Autoadapt was founded in 1996. The company's head office, development and production plant is in Stenkullen, in the south western part of Sweden.

Today Autoadapt is represented in 50 countries worldwide, with a network of more than 250 Autoadapt dealers. The company has a subsidiary in Birmingham, Autoadapt UK Ltd., for the UK market, adding 80 dealers to the list. Autoadapt products are also distributed to 400 dealers in North America by Bruno Independent Living Aids.



Autoadapt AB Sweden  
Phone: +46 302 254 00  
E-mail: [contact@autoadapt.se](mailto:contact@autoadapt.se)

Autoadapt UK Ltd. Birmingham  
Phone: 0121 3335170  
E-mail: [contact@autoadapt.co.uk](mailto:contact@autoadapt.co.uk)

[www.autoadapt.com](http://www.autoadapt.com)

# Autoadapt Safety Centre

