



Easy and comfortable transport  
- right into the vehicle

**CARONY®**



**INVENTIONS FOR QUALITY OF LIFE**

# CARONY® 12" and 24"

## The transport wheelchair that increases your freedom!

With CARONY you can move in and out of the vehicle without actually needing to rise from the seat. It's the seat itself that moves from the wheelchair wheel unit to the swivel base inside the car. It's easy and comfortable for both the passenger and the person assisting.

The low built seat is crash tested and fulfils current vehicle regulations and the passenger travels safely strapped by the vehicle seatbelt.

CARONY is available with two different wheel alternatives: 12" rear wheels, which is a transport wheelchair for those unable to drive themselves and with 24" drive wheels, for those who can.

The CARONY system, 12" and 24", consists of a wheel-unit, a comfortable seat, which is used both inside and outside the vehicle and the swivel base TURNOUT fitted to the car.



*Carony 12" is a transport wheelchair suitable for users needing assistance, who are unable to wheel themselves.*

By means of a couple of simple manual operations, you move the seat and passenger from the wheelchair frame to the front passenger position in the car. The compact wheel unit is stored in the boot when not in use. For vehicles with a higher step up, such as MPV vehicles etc., CARONY can be combined with the car seat lift TURNY.

- Collision tested and approved in accordance with current legal requirements.
- When seated in the car, the passenger uses the vehicle seat belt.
- A number of practical accessories are available for sitting comfort.
- Can be used with most car models – small or large, 2- or 4-door.

## This is how you dock the Carony wheel unit to the car

1. Start by turning the swivel base in the car outwards and dock the Carony wheelchair to it.

2. Undo the catch and push the seat across to the revolving seat frame.

3. Loosen the Carony wheel unit and turn the seat into its correct position in the car. Store the wheel unit in the boot.





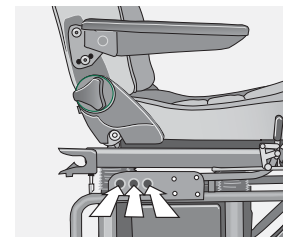
Driving characteristics as an "ordinary" wheelchair.

## Smooth and easy to use, even at home!

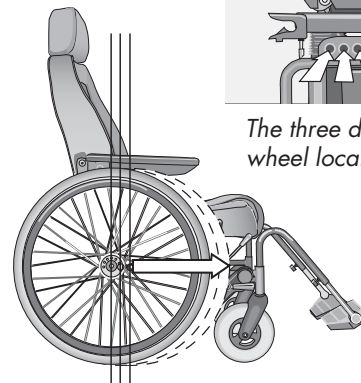
Apart from being a transport wheelchair, the CARONY 24" is also a comfort wheelchair, smooth and easy to use in the home, outside and in the car. It has all the advantages of the CARONY system including practical accessories for various needs and functions. See page 7 for more information on accessories.

The total width of the chair is 67 cm (26½") and therefore passes easily through door openings in the home. The ergonomic design of the CARONY gives a good sitting position - as good as an armchair.

It is possible to have the drive wheels in three alternative positions to adapt the chair to the needs, balance and driving ability of each individual user.



The three different drive wheel locations for best positioning.



1



2



3



4



5



6

# CARONY® Kids

## The chair that grows with your child!

CARONY Kids does away with having to lift the child and simplifies transport to and from the car. CARONY Kids adapts to your child as the length of the seat cushion can be adjusted to follow to the growth of the child. The cushion and backrest can be washed and changed, if you wish. When the child has grown out of the chair, it can be converted to adult size with the help of a kit from Autoadapt.

CARONY Kids is available in three alternatives:

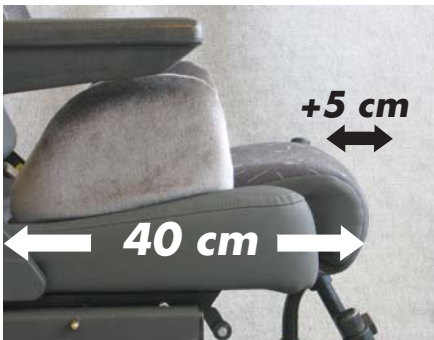
- with 12" rear wheels, a transport wheelchair.
- with 24" driving wheels for children who can drive the chair by themselves.
- as a CARONY Fixed wheel unit, which is of a standard fixed height.

CARONY Kids consists of a wheel unit, a comfortable seat with an adjustable neck cushion and body support, as well as a foot rack, facilitating turning in and out of a car.

The chair is combined with either the swivel base TURNOUT or the car seat lift TURNY. The wheel unit is supplied in ruby red as standard. Other accessories, as well as alternative wheel unit colours, are available as options (see page 6-7).

*Neck cushion and body support can be adjusted to give best possible support to the child as it grows.*

*The foot plates can be adjusted vertically and angled to a comfortable position.*



*The seat cushion can be lengthened by means of a Velcro band under the seat. Lift the seat cushion and move it forward as the child grows. Maximum extension is 5 cm (2").*



# CARONY 12" fixed<sup>®</sup>

## The transport chair, in combination with the car seat lift Turny

Carony Fixed is a CARONY version with 12" rear wheels, specially developed for use in combination with the car seat lift TURNY. TURNY's continuously adjustable raising and lowering function enables docking with the CARONY Fixed wheel unit which is of a standard, fixed height.

CARONY Fixed wheel unit is supplied in ruby red, has all the advantages of the CARONY system, including many practical accessories which make the chair easy to adapt to special requirements or demands in connection with seating comfort. Anti-tipping device is included as standard.

CARONY Fixed can not be combined with the swivel base TURNOUT.



1. Lower Turny to a suitable height to dock with the wheel unit.



2. Dock securely with the wheel unit and push the seat across.



3. Now, you're ready to go!



*Carony Fixed is an easy to drive and comfortable transport chair, simple to use for both the person seated and for the assistant.*



*Carony Fixed can also be combined with Carony Kids.*

## CORRECT DRIVING POSITION

The Carony chair has an ergonomically tested driving position for best manoeuvrability.

## PUSH HANDLE

The push handle is ergonomically designed.

## ARM RESTS

The Carony chair has robust, foldable and adjustable armrests as standard.

## VERTICALLY ADJUSTABLE WHEEL UNIT (Carony 12", 24" and Kids)

The wheel unit can be raised or lowered 11,5 cm (4½") to suit different cars and ground conditions when docking to the car. Raising/lowering is done with a crank on the side of the wheel unit.



## SAFETY FIRST

The seat has lateral and neck supports. It has been collision tested in position (in cars) and stand up to the safety standards of most car manufacturers. The Carony Transport wheelchair is CE-marked and approved by the Swedish Handicap Institute.

## COMFORTABLE SEAT

The seat is easy to adapt for different requirements, thanks to all the accessories available.

## STURDY WHEELS

The wheels are solid and sturdy to enable driving under all conditions.



**CARONY<sup>®</sup>**  
**Go!**

For information on our power wheelchair the Carony Go, please visit our web site [www.autoadapt.com](http://www.autoadapt.com) or send for the Carony Go brochure.



**TILDA<sup>™</sup>**

TILDA tilts the seat in 3 positions and makes it even easier to get in and out of the vehicle. In combination with CARONY, TILDA will provide more head space as the seat slides over from the Carony wheel unit to the swivel base inside the vehicle.



# Accessories



## BODY SUPPORTS/ THIGH SUPPORTS

Provides the user with lateral support. Fixed under the seat or back-rest cushion of the BEV-seat. #100430



## LUMBAR SUPPORT

Fixed under the back-rest cushion of the BEV-seat and is adjusted as needed with the air pump. #100432



## COMFORT HEADREST

Foldable in two joints. Available for BEV-seat. BEV #100458



## BACKREST/ SEATCUSHION

Removable seat- and backrest cushions for the BEV-seat. Backrest #412134 Seat cushion #412240



## PRESSURE RELIEF CUSHION

A seat cushion with unique pressure relieving properties. < 75 kg #101649, > 75 kg #101650



## ANGULARLY ADJUST- ABLE LEG SUPPORTS

Can be adjusted according to required leg angle. Right #100424 Left #100426



## NECK SUPPORT ROLL

Fixed around the neck-rest, providing lateral relief for the head. #100665



## SEAT BELT DEFLECTOR

For children/short persons who need to adjust the diagonal upper part of the seat belt downwards. #100681



## CALF BAND

Fixed around the leg supports for additional support behind the calves. #100440



## ANTI-TIP DEVICE

Fixed to the wheel unit to prevent tipping over backwards. #100853



## HEEL SUPPORT

Keeps the feet in position on the foot plate. #100630



## FOOT RACK

Facilitates when turning in or out of the vehicle. #100680



## PUNCTURE FREE FRONT WHEELS 8"

#100697

## REAR WHEELS 12"

#100438



## TRANSPORT FITTINGS

Fittings for anchorage with straps in vehicles, type Q' Straint. Collision tested "with passenger" and approved in accordance with ISO standards. #101166



## CHILD LEG SUPPORTS

#100754

## HEIGHTENING KIT

For certain installations of CARONY in vehicles with a higher step up. Height: 5 cm (2") NOTE! Not applicable to Carony Fixed. #100700

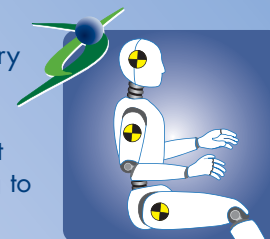
## FOLDING FUNCTION FOR BACK REST

For 2-door vehicles. NOTE! Not applicable to Carony Kids. #100699

## POSTURE BELTS

6-point, 4-point and 2-point fixings. For persons with different degrees of bodily instability. 2-p. #100425, 4-p. #100422, 6-p. #100423

The Autoadapt test laboratory is accredited according to ISO/IEC 17025:2005  
 The Autoadapt management system is certified according to ISO 9001:2000



	CARONY 12"	CARONY 24"	Kids 12"	12" Fixed
Total length incl. footrest	1025 mm	1090 mm	1025 mm	1025 mm
Length excl. footrest	690 mm	790 mm	690 mm	770 mm
Width	620 mm	670 mm	620 mm	620 mm
Total weight	36,5 kg	38,3 kg	38,5 kg	35,5 kg
Wheel unit weight	14 kg	14 kg	14 kg	13 kg
Seat length	500 mm	500 mm	400-450 mm	500 mm
Seat width	440 mm	440 mm	440 mm	440 mm
Seat height at front edge	510 mm	510 mm	510 mm	510 mm
Backrest angle	-19° à 23°	24° à 20°	19° à 2°	-19° à 23°
Turning space	1400 mm	1400 mm	1400 mm	1400 mm
Wheel dimension rear	12"	24"	12"	12"
Wheel dimension front	8"	175mm x 27mm	8"	8"
Docking levels				380, 430, 480 mm
Carony has been tested as follows:	74/408/CEE including amendment 74/60/CEE including amendment 93/42/CEE, 95/28/CE ECE R-17, ECE R-21 and ECE R-25 FMVSS 201, 202, 207, 208, and 302.		Tested for transport, tied down in a vehicle without the Carony swivel base, according to: ISO-7176-19 and ISO-10542	
Carony is included on the Swedish Handicap Institute's list of good aids for the disabled!				

[www.autoadapt.com](http://www.autoadapt.com)

**Autoadapt AB**

Åkerivägen 7, S-443 61 Stenkullen, Sweden  
 Phone: +46 302 254 00  
 E-mail: [contact@autoadapt.se](mailto:contact@autoadapt.se)

**Autoadapt UK Ltd**

Unit 1 Windsor Industrial Estate Rupert Street, Aston,  
 Birmingham B7 4PR, UK  
 Phone: +44 (0)121 333 5170  
 E mail: [contact@autoadapt.co.uk](mailto:contact@autoadapt.co.uk)  
[www.autoadapt.co.uk](http://www.autoadapt.co.uk)

